



# Aza-Direct®

BOTANICAL INSECTICIDE

## AZA DIRECT® 1.2 CE - BROAD SPECTRUM BIOLOGICAL INSECTICIDE

**AZA-DIRECT® controls target pests on contact or by ingestion. The product acts on pests by way of repellence, antifeedance and interference with the molting process.**



WhiteFlies



Leafminers



Fruit Flies



Beetles



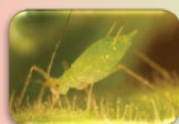
Weevils



Hoppers



Psyllids



Aphids



Thrips



Mealy Bugs



### AZA DIRECT® 1.2 CE KEY FEATURES

**Azadirachtin-based botanical, antifeedant, repellent and insect growth regulator for use on greenhouse, & outdoor food crops, ornamental flowers, trees, shrubs and plants.**

- Broad-spectrum biological insecticide for both organic and conventional agriculture systems
- Superior formulation makes Aza-Direct one of the most stable and Effective azadirachtin insecticides in the market
- Exempt from tolerances
- Minimal PPE / Worker safety friendly and soft on beneficial insects and pollinators
- Multiple modes of action for resistance management

### AZA DIRECT® EFFECTIVE ON A WIDE RANGE OF CROPS

- Fruiting vegetables
- Cucurbits
- Legume vegetable
- Leafy vegetables
- Bulb vegetables
- Herbs & Spices
- Cotton & Tobacco
- Citrus • Tropical Fruit
- Tuber vegetables
- Ornamental

### AZA DIRECT® APPLICATION

**Apply AZA-DIRECT as a foliar spray or a drench to soil or non-soil media to control insects. When needed, soil drenches can also be used to control soil-borne pests, including soil-borne larvae of foliar insect pests.**



- Apply AZA-DIRECT as directed to any food or non-food crop up to and including the day of harvest, at a maximum rate of 475ml/Acre
- Make 2-3 applications at 7-10 day intervals.
- Spray in the morning or evening hours
- Repeat application if rain occurs within 2-3 hrs of spraying.